



CREATIVE PULTRUSIONS, INC.

SuperLoc™ Composite Sheet Pile System* Product Brochure



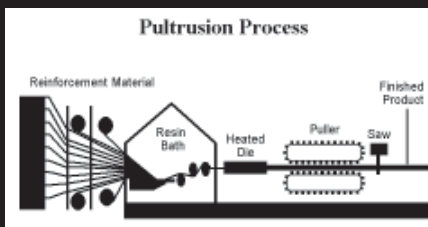
The Perfect Solution for Shoreline Protection

*Offering a complete line of quality, composite products
to the marine industry.*

**Wale & Retaining Wall System
(US Patent #6,893,191 B2/May 17, 2005)*

What is Pultrusion?

Pultrusion is a continuous manufacturing process which creates fiber reinforced polymer profiles of extraordinary strength and resilience. The reinforcement material is drawn through a liquid thermosetting resin bath. The wet, fibrous laminate is pulled through a heated steel die, where precise temperature control cures the material into the profile required. Necessary strength, color and other characteristics can be designed into the profile by changes in the resin mixture and reinforcement materials.



Features and Benefits of Fiber Reinforced Polymer Composites

The Creative Pultrusions quality process is based on a strong commitment to continuous improvement in products, service, operations and client satisfaction. Product benefits include the following:

- Weather Resistant
- High Strength
- Flexibility
- Dimensionally Stable
- Low Maintenance
- Energy Efficient
- Enhanced Safety
- Structural Integrity
- Long-term Performance
- Reduced Assembly
- Inexpensive Installation
- Unlimited Supply

It all adds up to the kind of manufacturing experience you'd expect from a world authority--meeting your needs and getting results.

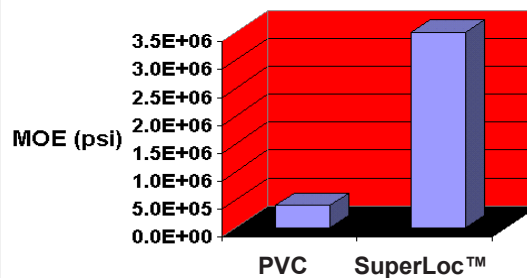
High Performance Characteristics Make SuperLoc™ the Ideal Material for Marine Retaining Walls

SuperLoc™ Composite Sheet Pile System, a fiber reinforced polymer (FRP) composite system, is manufactured by the pultrusion process and is designed and manufactured to provide a solution for deteriorated waterfront structures subjected to the harsh marine operating environment. The population growth of marine borers, strict environmental laws that limit the use of toxic treatments for wood, and prohibitions on traditional maintenance practices (lead-based primers, sandblasting, and solvent-based paints) have resulted in higher maintenance and replacement costs for traditional materials. Also, SuperLoc™ will not leach harmful chemicals used in wood treatments, making them environmentally safe. Composite materials offer cost effective, long-term and low-maintenance solutions. The use of composite materials in various marine environments over the last ten years has shown to be more economical than traditional materials when life-cycle costs are considered.

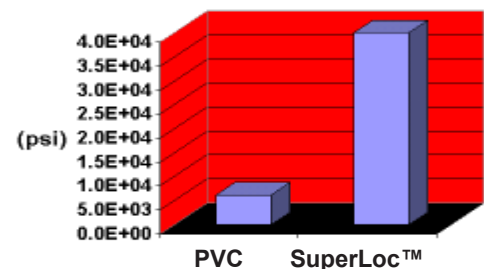
SuperLoc™ is an alternative construction material without many of the performance disadvantages of conventional materials such as aluminum, concrete and wood. SuperLoc™ will not corrode, decay, or spall thereby reducing maintenance costs and future replacements. The FRP composite system resists impact, creep, UV and weathering effects better than vinyl (PVC) materials and are easier to install in harder soils than vinyl (PVC) sheet pile.

SuperLoc™ Composite Sheet Pile System's is Patented (Wale and Retaining Wall System US Patent #6,893,191 B2/May 17, 2005), and is the **only** all composite system available in the market. The system consists of the following components: Interlocking Sheet Piling Panels, Interlocking Corner Connectors, Top Caps, Waler and Tieback Rods & Fasteners. Since each panel is lightweight with an interlocking design, installation equipment and labor is minimized during construction. Pultruded connectors are used to permit easy corner installation and the flexibility

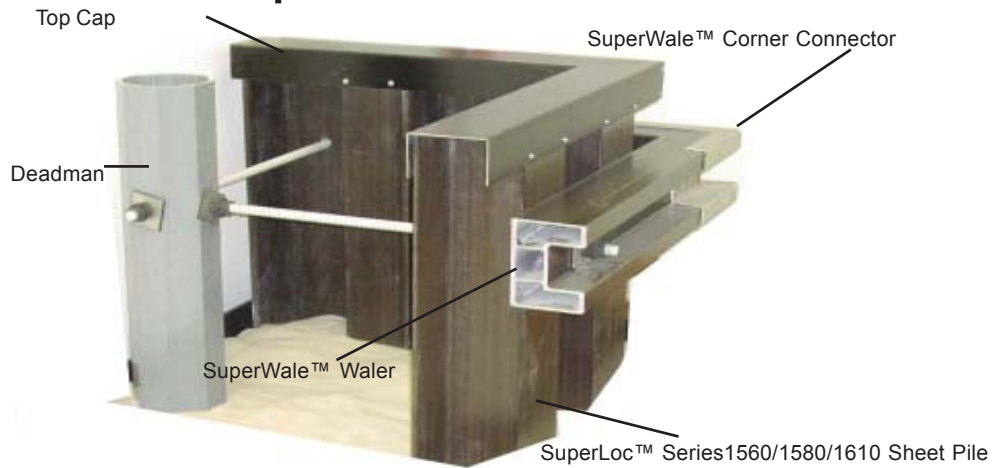
Modulus of Elasticity Comparison



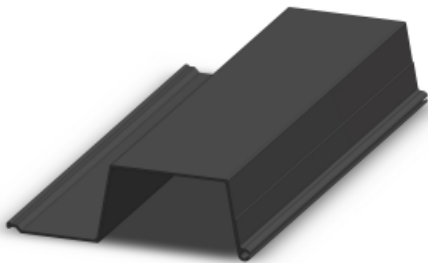
Tensile Strength



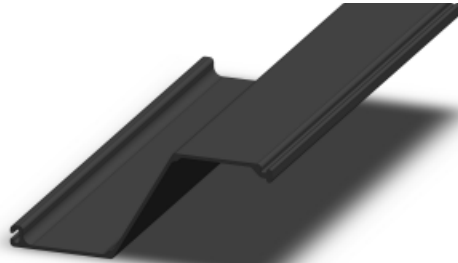
SuperLoc™ Composite Sheet Piling System Component Profile



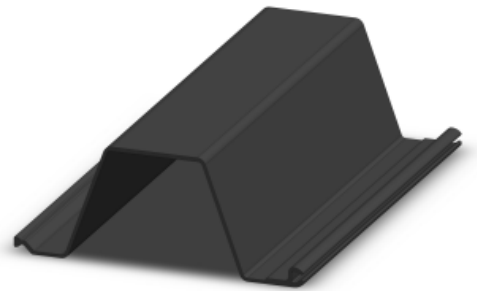
Sheet Piles



Series 1560 (SS806)
18" (457.2mm) W x 6" (152.4mm) H



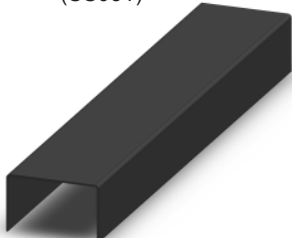
Series 1580 (SS860)
18" (457.2mm) W x 8" (203.2mm) H



Series 1610 (SS820)
24" (609.6mm) W x 10" (254mm) H

Accessories

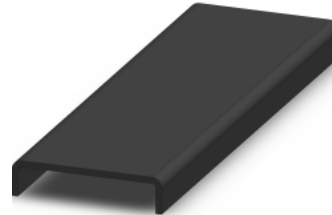
Series1560 Cap
(SS051)



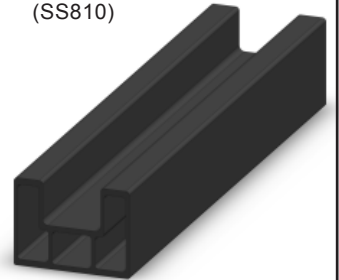
Series1580 Cap
(CH980)



Series1610 Cap
(CH995)



Superwale™ Section
(SS810)



Series 1560 Connector
(SS804) - 45°/90°
(SS809) - 90°/180°



Series1580 Connector
(PVC001) - 45°/90°



Series1610 Connector
(SS821) - 45°/90°



SuperLoc™ Composite Sheet Pile is Easy to Install



*Bobby Jones Golf Complex -
Sarasota, Florida*



*Hampton Marina -
Norfolk, Virginia*



*Trinity Presbyterian Church Installation -
Surfside Beach, South Carolina*



*Residential Completed Installation -
Wrightsville Beach, North Carolina*

Available SuperLoc™ Literature:

- SuperLoc™ 1560 Series Data Sheet
- SuperLoc™ 1580 Series Data Sheet
- SuperLoc™ 1610 Series Data Sheet
- SuperWale™ and Accessories Data Sheet
- SuperLoc™ Caps & Connectors Data Sheet
- SuperLoc™ Installation Profiles

Call today to find out how to make SuperLoc™ Composite Sheet Pile System your choice for marine retaining walls and to provide solutions to your shoreline protection and erosion control.

Flowgrip® and Pultex® are registered trademarks of Creative Pultrusions, Inc. Creative Pultrusions™, Shaping the Future™, Superstud™, Superstud™/Nuts!, Superstik™, SUPURTUF™, Superplank™, Superdeck™, Supergrate™, Tuf-dek™, SuperLoc™, SuperWale™, SuperCap™, SuperRod™, Pultrusion Dynamics™, DYNAPUL™, Pulshaping™, TOPSCAN™ and TOPDIE™ are trademarks of Creative Pultrusions, Inc.

CPM056-0699:IMr4
May 2006



CREATIVE PULTRUSIONS,

214 Industrial Lane ■ Alum Bank, PA 15521
Toll-Free: 888-CPI-PULL (274-7855) ■ 814-839-4186 ■ Fax: 814-839-4276
Web site: <http://www.creativepultrusions.com> ■ E-mail: crpul@pultrude.com

CPM106-0506r15C
DLR: 3/17/11

**Offering a complete line of quality, composite products
to the marine industry.**